

# GREENPOINTE Industrial Park

**Stokes King Road, Greenville MS 38701**  
**33 19'40" N, 91 07'05" W**

Greenpointe Industrial Park is a 1000-acre project-ready site with easy access to water, rail, highway, and air transportation. Under option with the WCEA, Greenpointe is the largest contiguous industrial site in the Mississippi Delta. Situated in the corner of the Arkansas-Louisiana-Mississippi tri-state area, Greenpointe Industrial Park leverages the nearby Port of Greenville, Greenville Mid-Delta Airport, US HWY 82, and Columbus and Greenville Railroad to give industrial partners every available option for transporting materials and products in and out of the park. Greenpointe is fully served by utilities, with a dedicated 300,000 gallon water tower and adjacent substation.

**WASHINGTON COUNTY**  
**ECONOMIC ALLIANCE**  
*A Chamber & Economic Development Partnership*

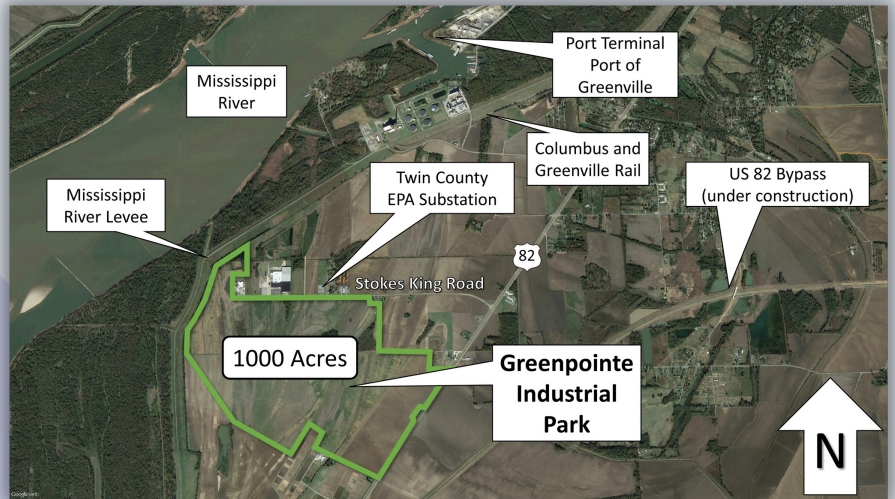
## Key Advantages

- 1000 project-ready acres. All due diligence has been completed.
- All utilities are on-site, including a water tower and substation.
- Adjacent to Port of Greenville, the largest slack water harbor in Mississippi.
- Greenville Mid-Delta Airport 10 miles away with daily jet service to Dallas and Nashville
- Adjacent to US HWY 82, with bypass (limited access) currently under construction
- Short line railroad less than 1 mile from the site. Pre-engineering for rail spur has been completed.
- Less than 1 mile from Greenville Mississippi River Bridge, allowing easy access to Arkansas and Louisiana.

# GREENPOINTE Industrial Park



- Approximately 5.2 million tons of cargo transloaded annually.
- 60 ton "all weather" covered bridge crane.
- 100 ton crawler crane.
- 400 ft. dock with five-barge capacity.
- Truck and rail bulk hopper.
- Served by Columbus and Greenville shortline rail



- **Electricity:** Twin County Electric Power Association; 3 phase, 7.62/13.2 KV WYE
- **Gas:** Atmos Energy; 4" line, 124 psi. Two 24" transmission lines run along the eastern boundary.
- **Telecommunications:** AT&T; Fiber-optic internet available on site.
- **Water/Sewer:** City of Greenville; 12" water and sewer lines. 300,000 gallon water tower on site.



**MARS** Ben's  
Food Original.

L A Z BOY<sup>®</sup>  
HEALTHCARE

KNÜ

USG Loveland

Nufarm BUNGE  
Industrial Partners

**William Coppage**  
Executive Director

342 Washington Avenue, Suite 201  
Greenville, MS 38701  
(662)378-3141  
wcoppage@wceams.com

**WASHINGTON COUNTY**  
**ECONOMIC ALLIANCE**  
*A Chamber & Economic Development Partnership*